



MILANO

GRAND TOUR



Grand Tour è la collezione ideata dal designer, autore e interior decorator **Nicolò Castellini Baldissera** per C&C Milano. I motivi tessili della collezione raccontano dei suoi viaggi ed evocano uno stile di vita che abbraccia tradizione e innovazione, che da sempre caratterizza le sue creazioni. L'Italia, il Medioriente e l'Asia si incontrano in un abbraccio di stile che grazie a materiali pregiati si traduce in stoffe raffinate disegni e colori dal mondo, per decorare spazi unici e finemente stravaganti all'insegna di uno spirito cosmopolita e curioso, proprio della visione progettuale di Nicolò Castellini.

Composta da una vasta gamma di tessuti adatti a diversi usi, la collezione **Grand Tour** si apre con tre disegni stampati in tre varianti colore su puro lino, perfetti per tappezzeria, tendaggi strutturati ed accessori decorativi dai nomi evocativi di posti lontani: Samarcanda, Smirne e Cairo che vengono tradotti anche in versione carta da parati e tappeti annodati a mano per decorare a 360 gradi qualsiasi tipo di ambiente. **Bamboo** e **Jasmine**, preziosi tessuti ricamati su una base in 100% lino, seguono un processo di destrutturazione partendo dal motivo di un antico campione proveniente dal Laos e scomposto nei suoi elementi essenziali. Reinterpretati in bianco candido, **Bamboo** e **Jasmine**, sono perfetti per confezionare preziosi tendaggi e accessori letto. Un'altra opzione in fibra naturale, misto juta e lino, sono **Jaipur** e **Kanpur** con sofisticati motivi tribali. Tessuti in doppia altezza, pesanti e sostenuti dai colori grezzi e materici per una decorazione unica degli spazi interni. L'amore per **Tangeri** e le sue audaci combinazioni di colore tanto amate da Nicolò Castellini ritornano aggiornate per questa collezione nelle righe in taffetà di **Mikado** e **Murano Millerighe**, immaginate per creare tendaggi strutturati in tinte forti e decise. Due articoli, questi, realizzati in fibra fire retardant **Trevira Eco** ottenuta dal riciclo post consumer di PET. Completano la collezione due tessuti in/outdoor in polipropilene per sedute e tappezzeria: **Laos** e **Bali** in quattro varianti colore brillanti e sofisticate come le località lontane che hanno ispirato i loro pattern.

Grand Tour is the collection dreamed up by designer, author and interior decorator **Nicolò Castellini Baldissera** for C&C Milano. The prints tell the story of his many travels and are evocative of a lifestyle anchored between tradition and innovation, that has always defined his work. Italy, the Middle East and Asia merge through precious materials that translate foreign patterns and colors into refined textiles, perfect to create the unique and sometimes eccentric decors mark of Nicolò's unconventional vision.

It comprises a range of textiles fitting different needs and tasks with three designs printed on a 100% linen base, perfect for upholstery and decorative elements declined in three colourways. The names are evocative of far-away places: Samarcanda, Smirne, Cairo and are all offered also in the wallpaper variant and handknotted rugs, catering to every environment. **Bamboo** and **Jasmine** are precious embroidery elevating a 100% linen base and come from the deconstruction of an antique sample found in Laos and broken down into his essential features. **Bamboo** and **Jasmine** are reinterpreted in stark white and are the perfect choice for precious curtains and bed accessories. Another option in natural fiber - a mix of jute and linen - are **Jaipur** and **Kanpur**, featuring sophisticated tribal motives. These are offered in double width, enriched by materic raw colors for a unique feel. A love for **Tangier** and key color combinations favored by the designer come back updated for this collection. The taffetà **Mikado** and **Murano millerighe** are imagined for structured curtains in bold colors, they are made of fire retardant fiber **Trevira Eco** obtained from recycled PET. Two new in/outdoor fabrics complete the collection: **Laos** and **Bali**, perfect for settee and upholstery in four vivid and sophisticated variants, tracing the many cultures that inspired these patterns.



(left page, on the wall)
Samarcanda wallpaper,
dust/natural. Cushion
Orchidea 60x40 cm in
Samarcanda powder/rosè
with fringe in Volterra rosè.
Cushion Orchidea 50x50
cm in Cairo green/lilac with
fringe in Volterra mauve.
Pouf: 40øx15 cm in Cairo
green/lilac and velvet
Fenice mauve; 60ø x 15
cm in velvet Fenice antique
pink with piping in Voletrra
rosè; 80øx15 cm in Smirne
wheat/barley and Volterra
barley; 80øx15 cm in Volterra
sand and Samarcanda
dust/natural; 40øx15 cm
in velvet Fenice jaguar with
piping in Fenice rosmari.
(this page) Dormeuse
upholstered in Volterra
rosè. Cushions: Orchidea
50x50 cm in Cairo green/
lilac with fringe in Volterra
mauve; Karkadè 50x50 cm
in Samarcanda green/lilac
with velvet piping in Fenice
aubergine; Ibiscus 60x60
cm in Smirne green/lilac.
Caio table by Casa
Tosca, covered in
Samarcanda green/lilac.







(left page) Cushions: Ibiscus 40x40 cm in Cairo powder/rosè; Ibiscus 40x40 cm in Samarcanda dust/natural; Karkadè 40x40 cm in Cairo dust/natural with piping in Volterra sand; Karkadè 40x40 cm in Smirne powder/rosè with piping in velvet Fenice jaguar; Orchidea 50x50 cm in Smirne wheat/barley with fringe in Volterra barley. (this page) Rug Bamboo in 100% tencel, green/lilac.





Grand Tour Collection wallpapers (from left): 231083 Cairo dust/natural; 231069 Samarcanda green/lilac; 231077 Smirne powder/rosè; 231079 Smirne wheat/barley; 231073 Samarcanda powder/rosè; 231081 Cairo green/lilac; 231071 Samarcanda dust/natural; 231075 Smirne green/lilac; 231085 Cairo powder/rosè.





(left page) Curtain in Jaipur raffia/sand, 65% linen and 35% jute. Curtain in Jasmine embroidered linen in natural white. (this page) Kanpur raffia/sand, 65% linen and 35% jute.



(this page) Curtain in Bamboo embroidered linen in natural white.

(right page) Cosmo table by Casa Tosca covered in Jaipur raffia/sand, 65% linen and 35% jute.





(this page) Neckroll in Mikado aubergine/petroleum and neckroll in Murano petroleum with borders in Murano Millerighe petroleum/olive. Pouf: 40øx15 cm Murano Millerighe petroleum/olive and pouf 60øx15 cm in Mikado aubergine/petroleum and Murano Millerighe aubergine/petroleum. (right page) Curtain in Mikado powder/rosè. Neckroll in Murano Millerighe powder/rosè and cushion Ibiscus in Murano raspberry.



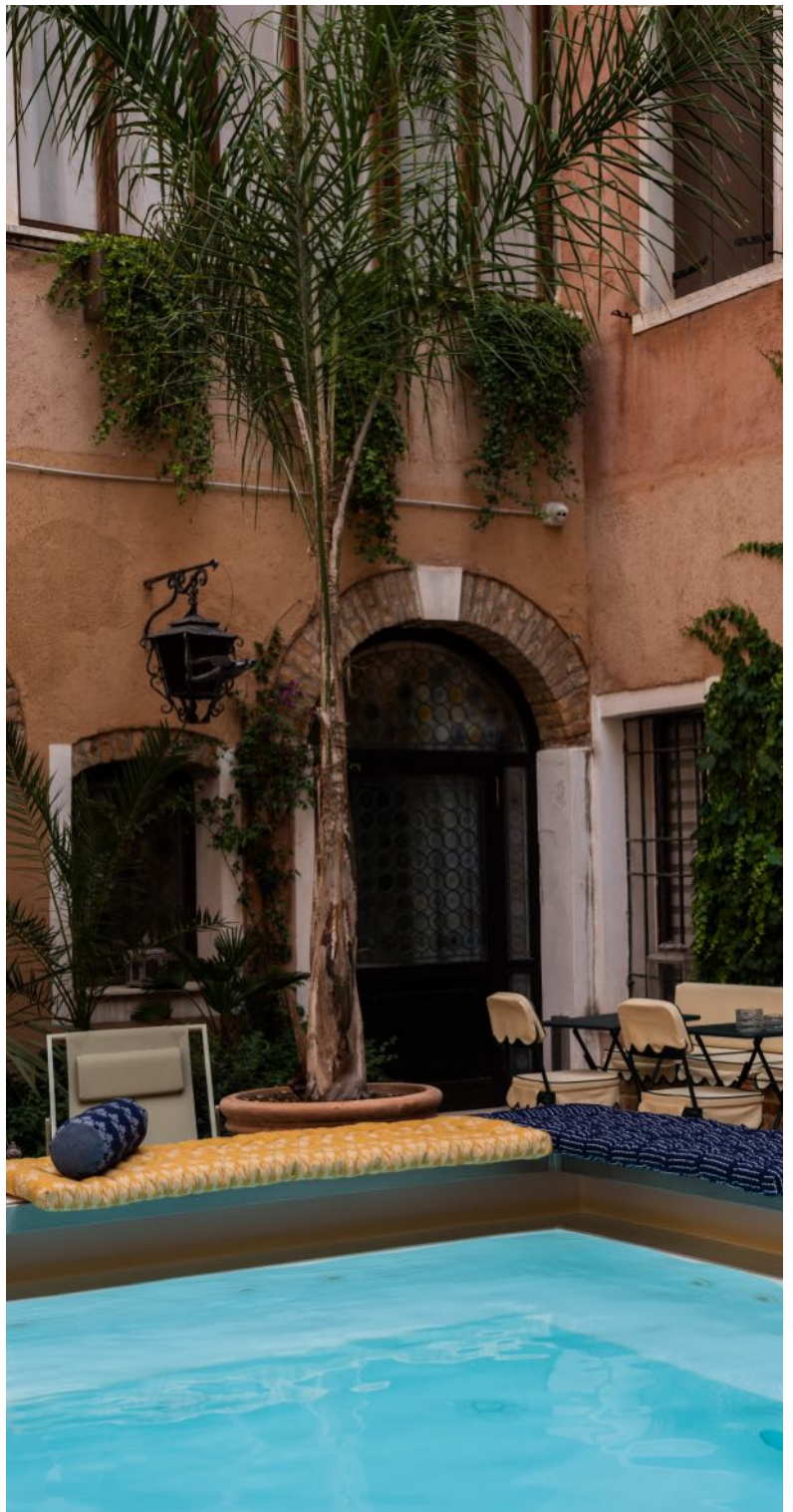


(this page) Curtains in Murano aubergine.

(right page) Pouf 60øx15 cm in Mikado mud/denim and Burano biscuit. Backdrop in Mikado mud/denim and Murano denim.







(left page) Neckroll in Bali blue/white and quilted mattress in Bali sunflower/white.
(this page) Neckroll in Bali blue/white and quilted mattress in Bali sunflower/white.
Quilted mattress in Laos blue/white.





Cushion Gelsomino 40x40 cm in Laos natural/white with gusset in Rua Siesta green lake.
Cushion Gelsomino 50x50 cm in Laos green lake/white with gusset in Rua Siesta green lake.

GRAND TOUR COLLECTION

Samarcanda
100% linen 



231020
dust/natural



231016
green/lilac



231022
powder/rosè

Smirne
100% linen 



231026
wheat/barley



231024
green/lilac

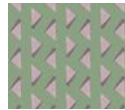


231025
powder/rosè

Cairo
100% linen 



231031
dust/natural



231030
green/lilac




231032
powder/rosè

Jaipur
65% linen, 35% jute 



231061
raffia/sand

Kanpur
65% linen, 35% jute 



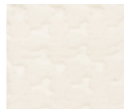
231062
raffia/sand

Bamboo
100% linen 



231060
natural white

Jasmine
100% linen 

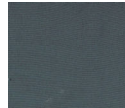


231059
natural white

Murano
100% Trevira Eco  



231057
aubergine



231058
denim



231056
petroleum

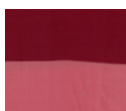
LECTION PRODUCTS

Mikado

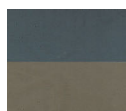
100% Trevira Eco  



231046
aubergine/petroleum



231044
powder/rosè



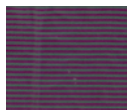
231045
mud/denim



231047
petroleum/olive

Murano Millerighe

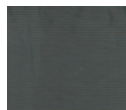
100% Trevira Eco  



231051
aubergine/petroleum



231048
powder/rosè



231049
mud/denim



231052
petroleum/olive

Bali

100% polypropylene   



231041
green lake/white



231042
blue/white



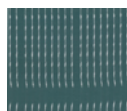
231038
natural/white



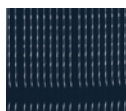
231040
sunflower/white

Laos

100% polypropylene   



231035
green lake/white



231036
blue/white



231033
natural/white



231034
sunflower/white

Samarcanda wallpaper



231071
dust/natural



231069
green/lilac



231073
powder/rosè

Smirne wallpaper



231079
wheat/barley



231075
green/lilac



231077
powder/rosè

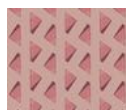
Cairo wallpaper



231083
dust/natural

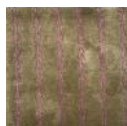


231081
green/lilac



231085
powder/rosè

Bamboo 100% tencel
handknotted 120.000 knots



Samarcanda 100% tencel
handknotted 120.000 knots



photography by Marco Valmarana



www.cec-milano.com